

# Gilmore Place | Visitor Parking Access

2186 Gilmore Ave, Burnaby, BC V5C 0N7 ([Building Location \(by Foot\)](#))

4120 Lougheed Hwy - Residential Visitor Parking entrance ([Visitor Parking Entrance](#))

T1 council has made this document to help your visitors

## Entry Summary:

- This is a new building with 3 towers, and active construction going on so finding visitor parking is a little challenging.
- You need to share your **Tower Number 1,2 or 3** and **Suite Number** parking is common for all buildings.
- The **Buzzer code** is **Tower** and **SUITE NUMBER#** EG **T1 7101**
- You enter from 4120 Lougheed Hwy, and follow signs for **Residential Visitors** spiraling around going around and down reach visitor parking on P3
- **On entry to parking lot take a ticket you will validate it when you leave**

## Leaving Summary

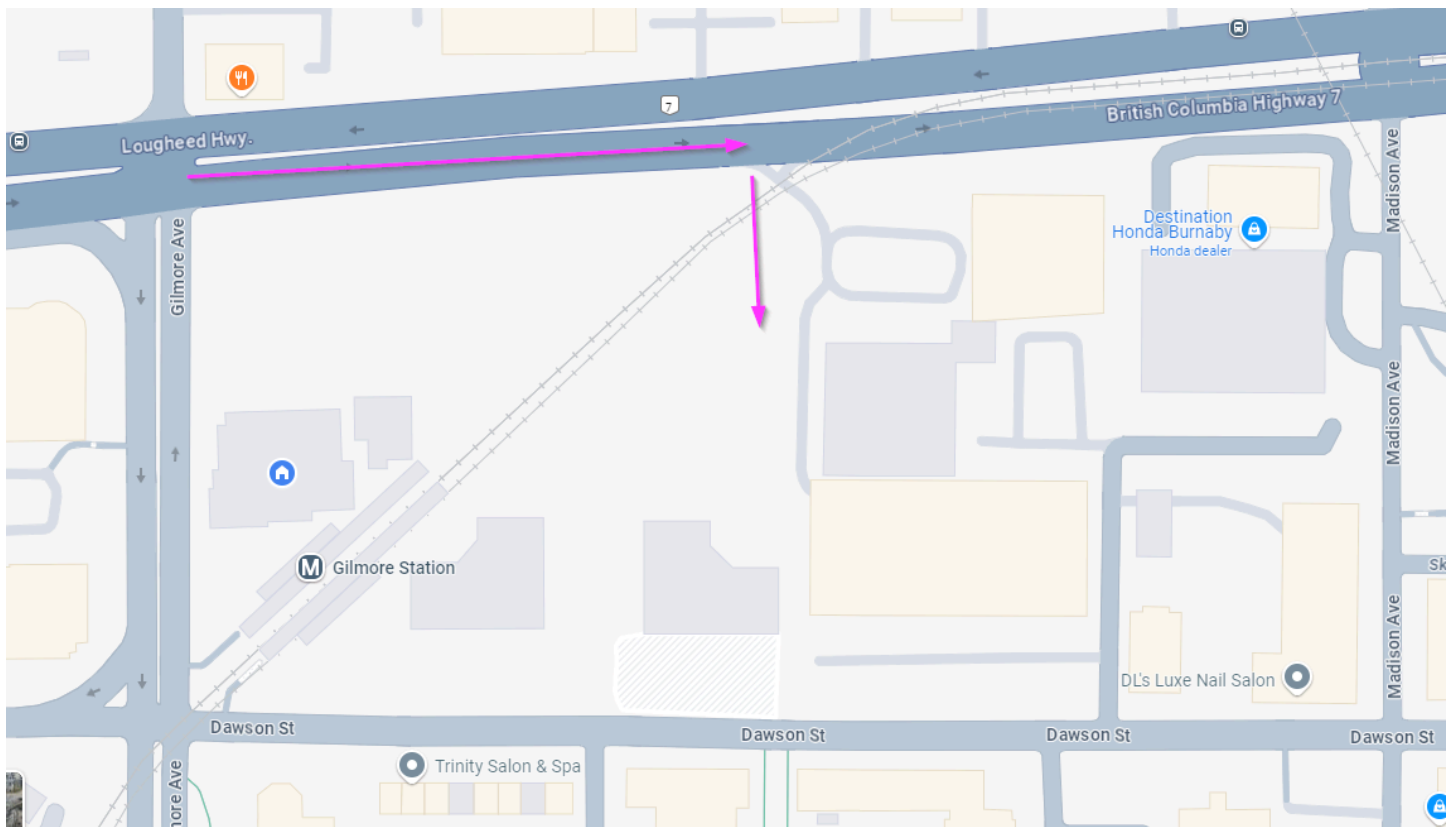
- When going back home, after existing elevator on P3 take a right instead of left as 1 side door is locked from inside, see more below at end of PDF
- Validate you ticket at a machine on P3 and you have 15 mins to exit

## If coming by foot:

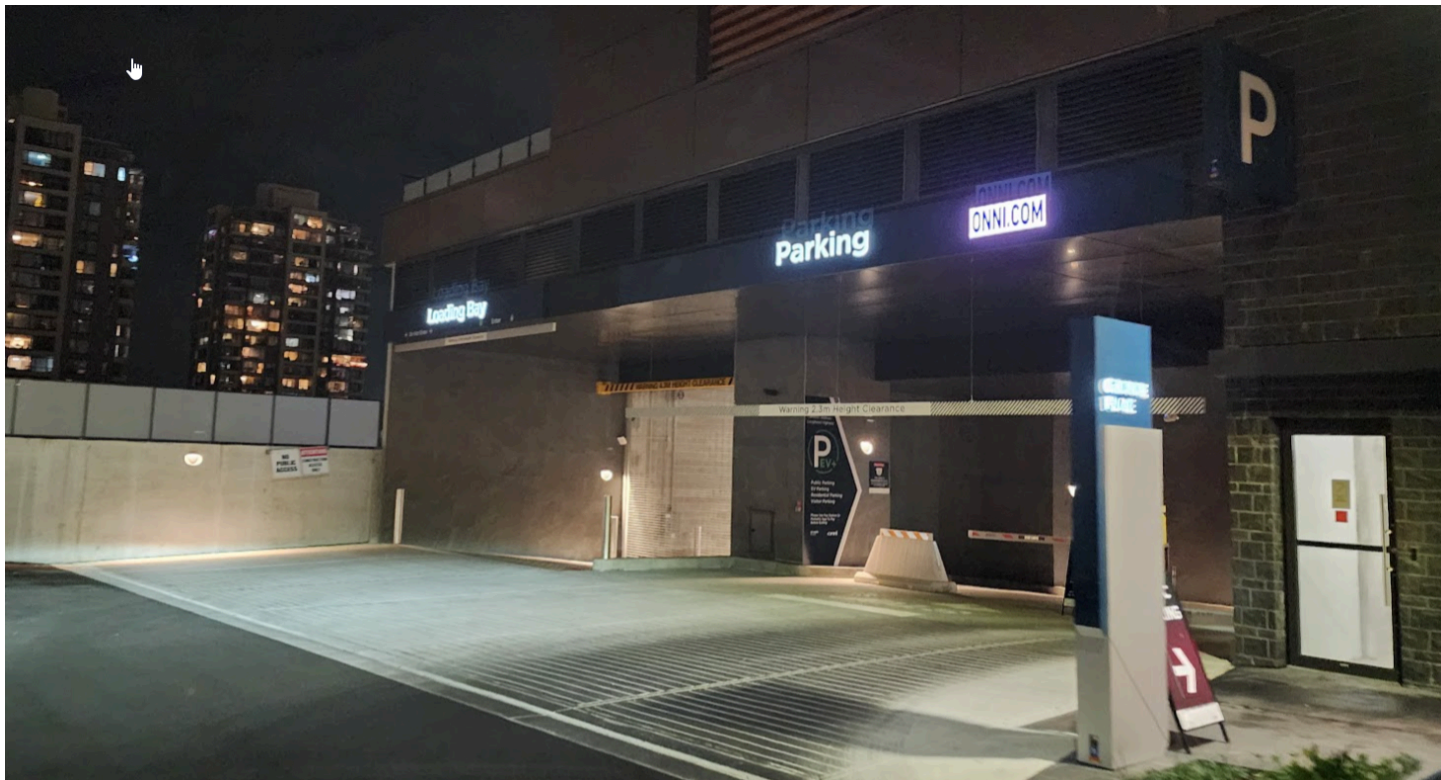
- Enter from 2186 Gilmore Ave entrance
- Use Buzzer Code and enter lobby

## By Car

To access the parking entrance, You currently have to drive East on Lougheed Hwy , looking for 4120



Parking Entrance



Residential visitor parking is free, but Visitors must pull a ticket from the entry kiosk.

**VALIDATE** when they are leaving, **NOT** when they arrive



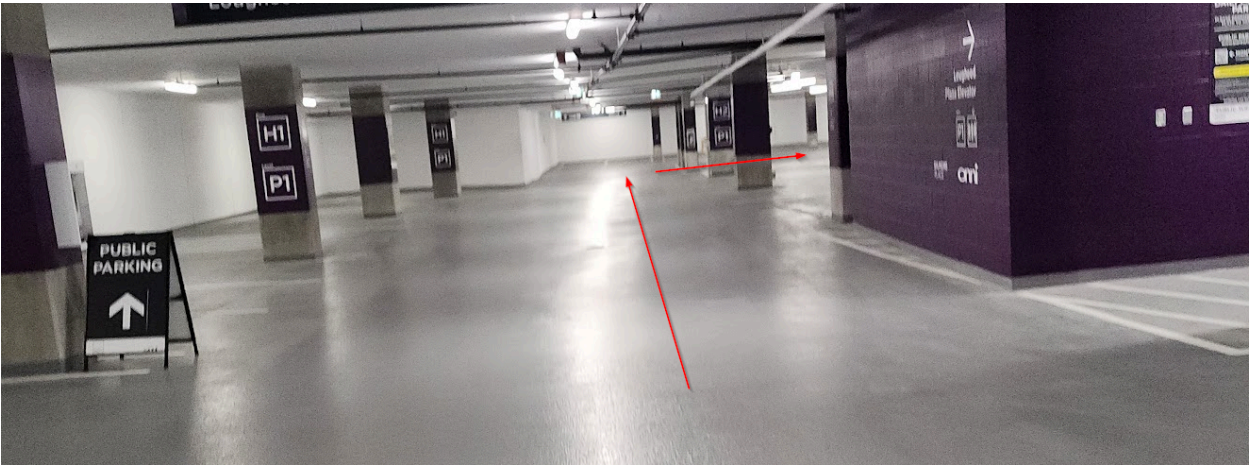
You want to stay in the purple columns until you get down to **P3** in a big spiral







You are then following the parking lot around and down to P3



To the down ramp



Now keep going down the ramp, and follow signs to Level P3



You will get to the gate and the entry phone





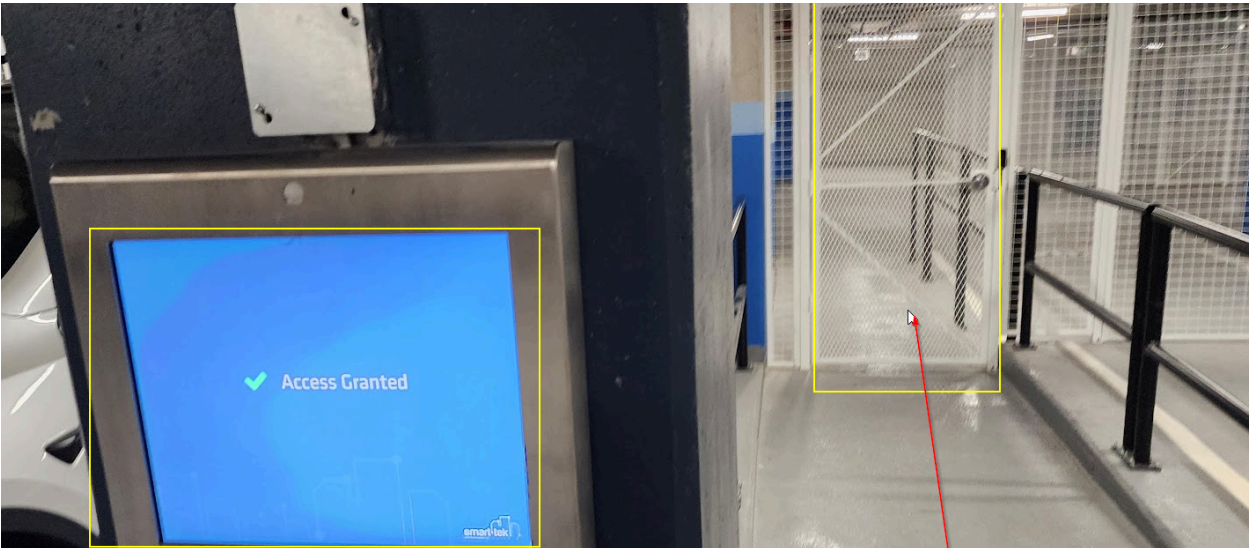
This is for all three tower so search **SUITE CODE** the enter UNIT NUMBER  
This is where you will need to know **Tower #** to call the right tower.



Once you are through find a spot marked **VISITOR**

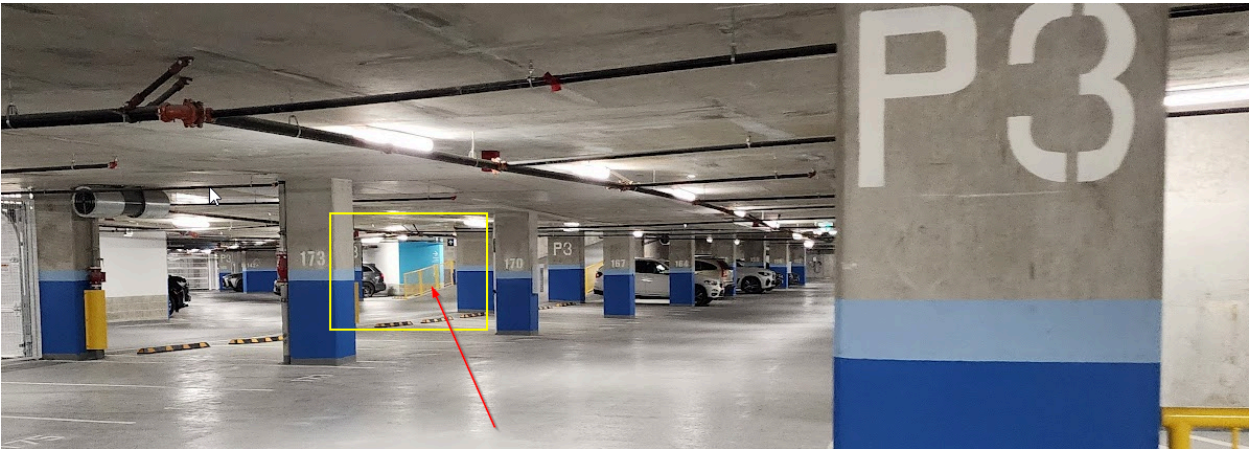


This is for all three tower so search **SUITE CODE** the enter UNIT NUMBER  
This is where you will need to know **Tower #** to call the right tower.

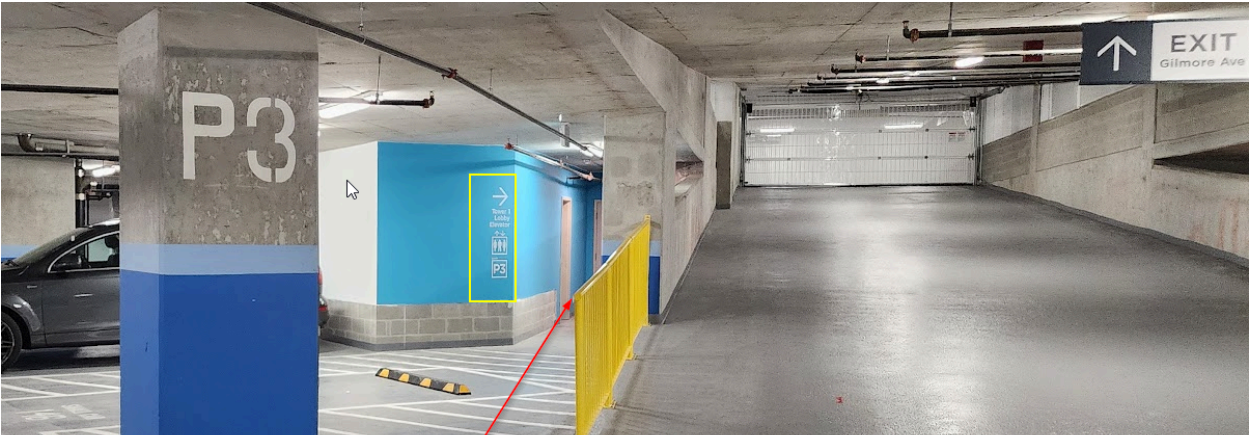


Through the door **head towards the light blue**





Go beside the up ramp



Through the door at the end



Toward the elevators



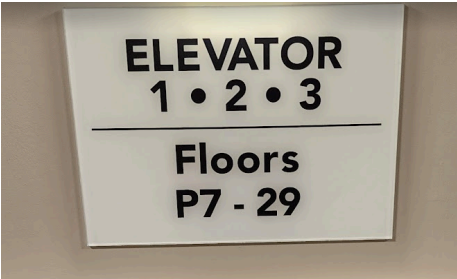
Last time you need to do the entry phone, **TX YYYY (4 Digit Unit Number)**





Use the **LEFT** side elevators **1-2-3** to go to floors **P7 to 29**,

Use the **RIGHT** side elevators **4-5-6** to go to floors **30-51**,





**To Exit! Dude Where's my car!?!**

You will go right from **P3 level, Exit right from the lift doors and then left at this door**



If you turn left that door is locked from inside (only opens from outside). So you won't go out from the same door as you came in on P3.



and must walk around to the left for visitor parking





Validate your parking ticket here.



You have started the countdown you have 15 mins to exit for free

